

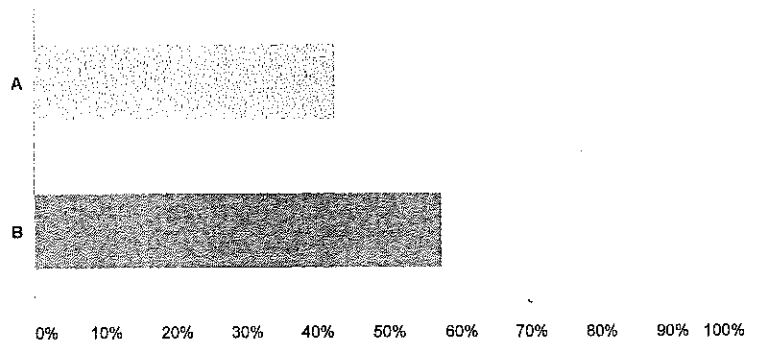
Q1

Customize

Export

Which Calendar option do you prefer, A or B?

Answered: 75 Skipped: 1



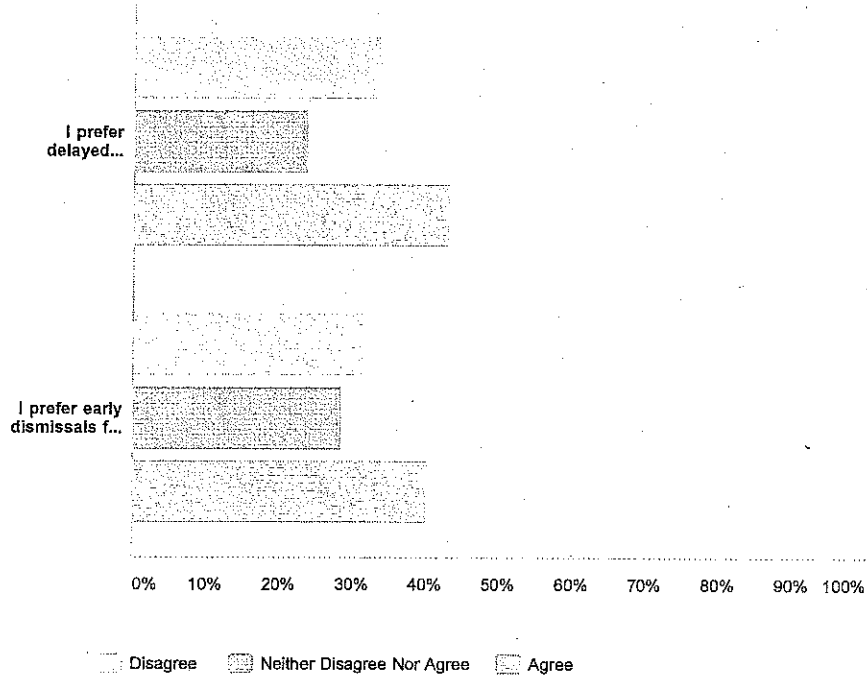
Answer Choices	Responses
▼ A	42.67% 32
▼ B	57.33% 43
Total	75
Comments (25)	

Q2

Customize Export

Evaluate the following statements.

Answered: 75 Skipped: 1



	Disagree	Neither Disagree Nor Agree	Agree	Total Respondents
I prefer delayed openings for professional development days, in alignment with the High School Calendar.	33.33% 24	23.61% 17	43.06% 31	72
I prefer early dismissals for professional development days, not in alignment with the High School Calendar.	31.34% 21	28.36% 19	40.30% 27	67