

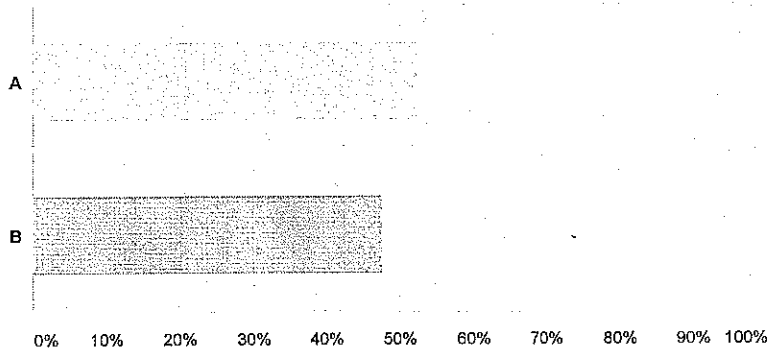
Q1

Customize

Export

Which Calendar option do you prefer, A or B?

Answered: 21 Skipped: 0



Answer Choices	Responses
▼ A	52.38% 11
▼ B	47.62% 10
Total	21

Comments (7)

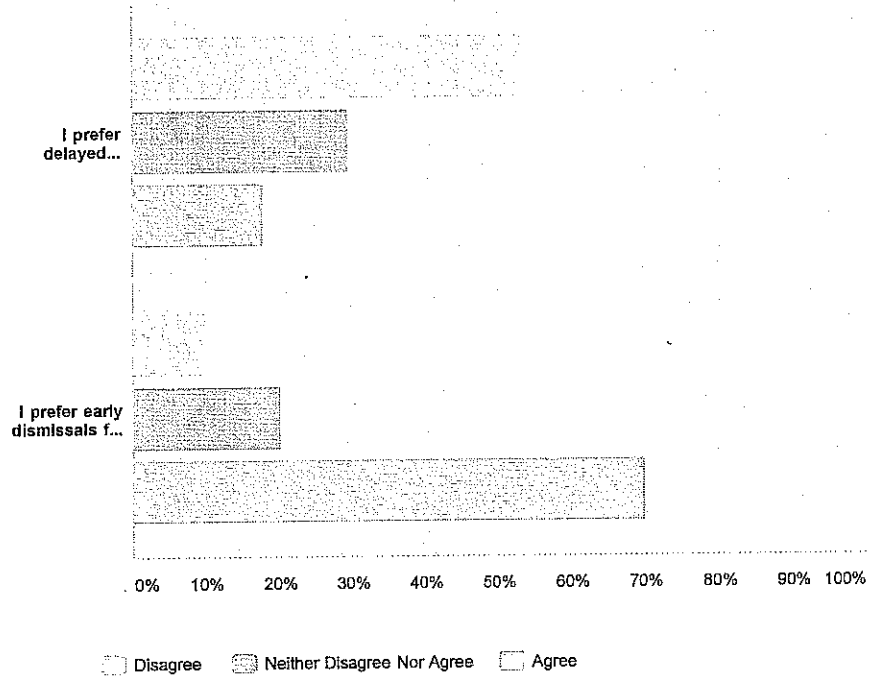
Q2

Customize Export

Evaluate the following statements.

Answered: 21 Skipped: 0

10/24/14 3:19 PM



	Disagree	Neither Disagree Nor Agree	Agree	Total Respondents
I prefer delayed openings for professional development days, in alignment with the High School Calendar.	52.94% 9	29.41% 5	17.65% 3	17
I prefer early dismissals for professional development days, not in alignment with the High School Calendar.	10.00% 2	20.00% 4	70.00% 14	20