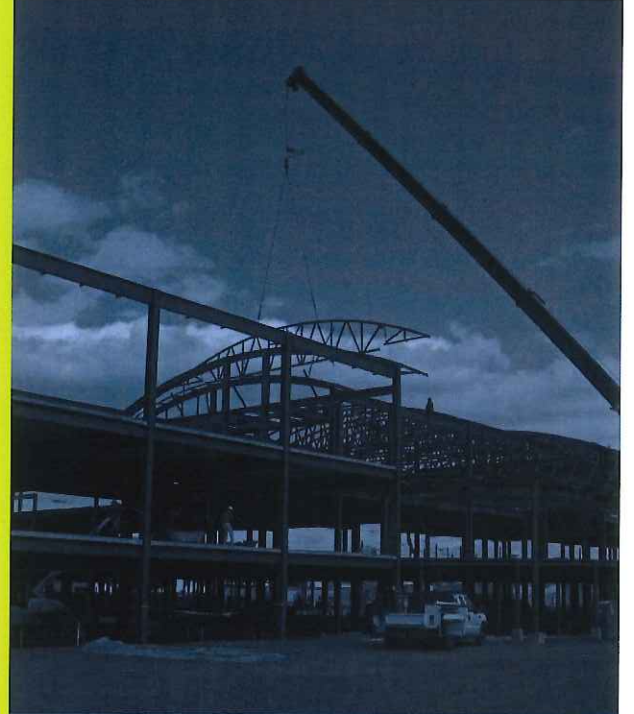
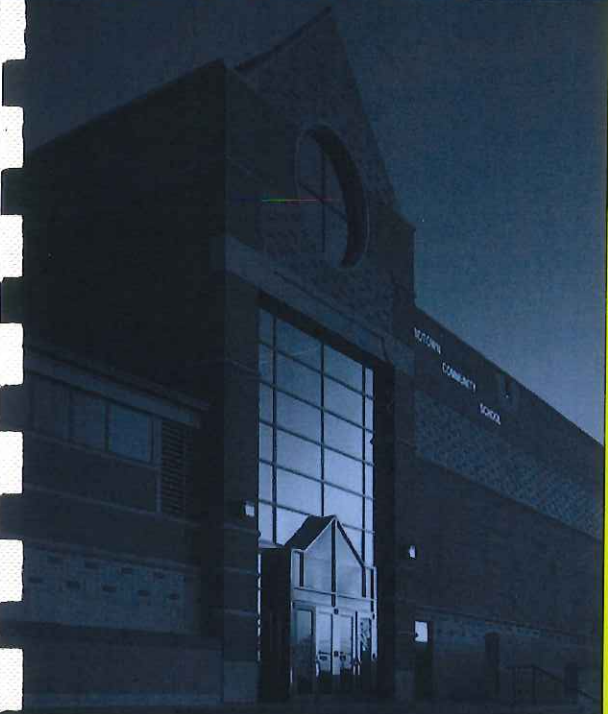




# Franklin Township School District



Architect of Record  
Services

1891 **ssp**  
architects



# SSP Architects

*Your Resource for Educational Facilities Needs*

## Longevity

- 126 years in New Jersey
- Service with integrity
- Reputation for responsiveness



## Knowledge / Experience

- Specialized focus on K-12 facilities
- Adept at local and state processes
- Facility master planning leaders



## Innovation

- First Long Range Facility Plan
- First Community School
- First NJSDA LEED Platinum School
- First USDA Green Ribbon School
- First NJSDA Design-Build Project



## Design for the Real World

- Commitment to sustainable design
- Fiscal responsibility
- Solutions for YOUR district



1891  
**ssp**  
architects



# Understanding

*It's More than Just the Buildings*

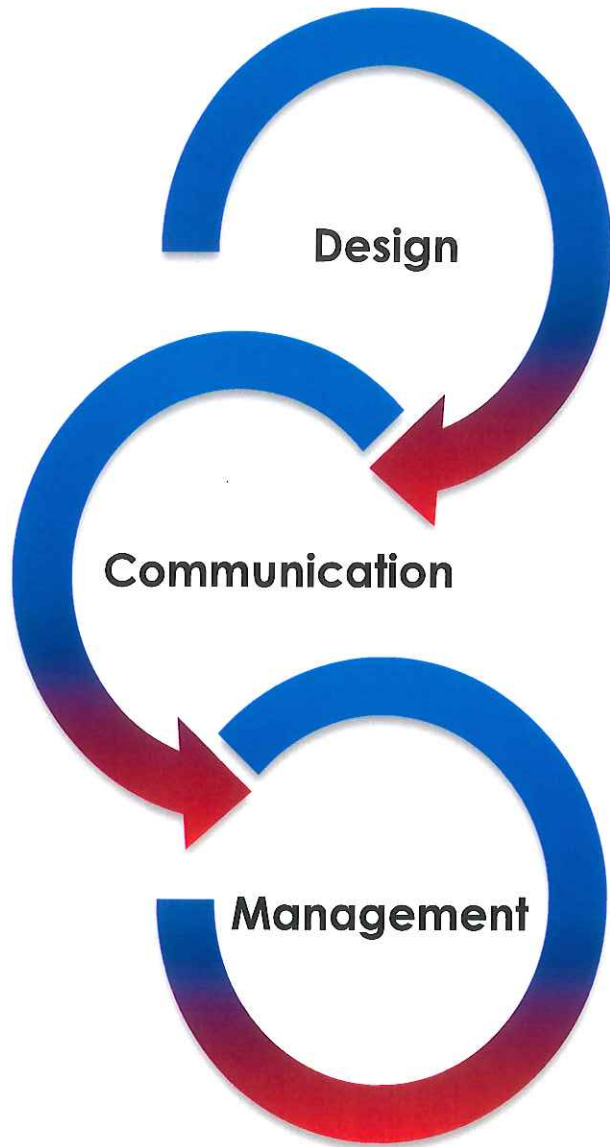
## Schools Are Your Most Valuable Asset

- Safe, sound, and conducive to offering the educational programs found in twenty-first century classrooms.
- Impacts on instruction, student achievement, teacher job satisfaction, and perceptions toward the district.
- The growing need to maintain the physical plants may be daunting without a partner who offers real understanding of the entire process coupled with a common sense approach to the tasks that schools districts are faced with managing building projects.



1691  
**ssp**  
architects

# Your Team



**Scott Mihalick**  
Principal & COO  
*Principal-in-Charge*



**Glenn Arbesfeld**  
Associate  
*Project Manager*



**Bianca Tulloch**  
Project Coordinator



**Marcus Rosenau**  
Principal  
*Quality Control*





# Hunterdon County Experience

*We're Right Next Door, Ready to Serve*



## **Frenchtown Elementary**

- LRFP
- Pre-referendum planning and communications support
- ROD grant applications
- Gymnasium renovations-flooring and divider wall
- Roofing replacement
- Window replacement
- Toilet room renovation
- Boiler plant replacement
- Paving and sitework



## **Milford Public Elementary**

- LRFP
- Pre-referendum planning and communications support
- ROD grant applications
- Electrical upgrades
- Roofing replacement
- Security renovations
- Toilet room renovation
- Flooring replacement
- Window replacement



## **Hampton Board of Education**

- LRFP



## **Delaware Township School District**

- LRFP



# Hunterdon County Experience

*We're Right Next Door, Ready to Serve*



## Delaware Valley Regional High School District

- Renovations
- Feasibility studies
- Master planning
- NJDOE submissions
- Exterior envelope repairs



## Stockton Borough School

- LRFP
- ROD grant applications for structural repairs and HVAC upgrades



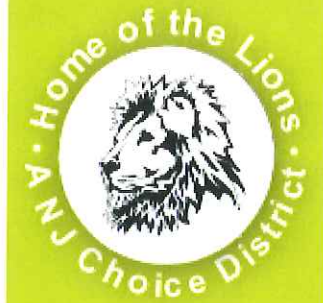
## Readington School District

- LRFP
- ROD grant applications
- HVAC upgrades
- Paving and sitework
- Feasibility studies
- Classroom renovations
- Science lab renovations



## Tewksbury School District

- LRFP
- ROD grant applications
- Emergency generator
- Security system installation
- Generator installation
- Sitework





# SSP Architect of Record Services

## Know the District

- Meet with the District to reaffirm educational *and* facilities vision
- Provide **Administration** and **Board updates** on a regular basis to inform on planning, design, and construction activities
- **Budget management** and tracking

## Planning

- Conduct facilities planning activities to identify future needs
- Prioritize facilities projects to reflect reality of budgets, schedules
- Long Range Facilities Plan (LRFP) submissions to NJDOE
- Project Applications to NJDOE
- Prepare ROD grants or other **funding** applications
- Referendum planning, including communication activities



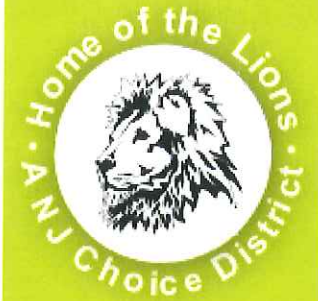
# SSP Architect of Record Services

## Design

- Feasibility studies, conceptual options and budgeting
- Schematic design and educational specifications
- Design development and cost estimating
- Construction documentation for permitting and bidding
- **Quality control** and coordination reviews

## Construction Administration

- Interface with regulatory agencies, incl. **local code authority**
- Regular site visits by experienced field representatives
- Submittal, RFI, change order **tracking** through user-friendly project-management software (Newforma)
- Ongoing **communication** with Administration, Board and District staff





# Educational Facilities Planning

*Design Approach*



## A partnership to strengthen educational growth.

- Understand educational vision for the future
- Tour while school is in session to know all school activities, adjacencies, disciplines, educational models & teaching methodologies
- Examine program to get to the best plan that fits educational goals
- Analyze demographics, educational trends, growth factors, transient/enrollment fluctuations, population and curriculum objectives to provide context for facility-related decisions
- Apply a long-range facility planning perspective in addition to developing a pragmatic options for consideration

# Capital Projects

## *Design Approach*

### **A partnership to build opportunities for success.**

- Investigate “bones of buildings” to tell the story
- Acquire deep understanding of existing conditions, construction & infrastructure of facilities, including all building system components, technology and maintenance implications/practices
- Working with input from district, identify the essential needs for each facility and for the site
- Determine time & cost impacts of potential design choices early in the Predesign Phase
- Make the best plan the most cost effective plan & success-oriented plan





# The SSP Advantage

*We're Right Next Door, Ready to Serve*

## Partnering with Franklin Township Board of Education, Administration and Community

- **SSP Team culture – Constant Communication**
  - Built-in Quality Control
  - Reduction of addenda
  - Fewer change orders
- **Scope Creep and Budget Awareness**
  - Team experience with complex renovation/expansion projects
  - Identification of critical factors early in process
  - Communication throughout process



1891  
**ssp**  
architects

# Why SSP Architects?

*The Benefits to Franklin Township*

Responsive

Collaborative

Experienced

Trustworthy

*A proven team that will partner seamlessly with the **Franklin Township School District** to create a great educational environment to build on the tremendous success of the Franklin Township educational community and be a source of **UNITY AND PRIDE.***



1891  
**ssp**  
architects





# Franklin Township School District



## THANK YOU

1891  
**ssp**  
architects

**Questions:**

Scott Mihalick  
Principal  
[smihalick@ssparchitects.com](mailto:smihalick@ssparchitects.com)  
908.725.7800 office  
908.963.4411 cell

